

Monthly Children's Hospital Helicopter Activity Summary

April 2021



23

Patient Transport Flights



0

Flights Used the Northern Flight Path

10

Overnight Patient Transport Flights



93

Flights Legs to and from Lakefront Airport



Patients were flown to Children's Hospital for...

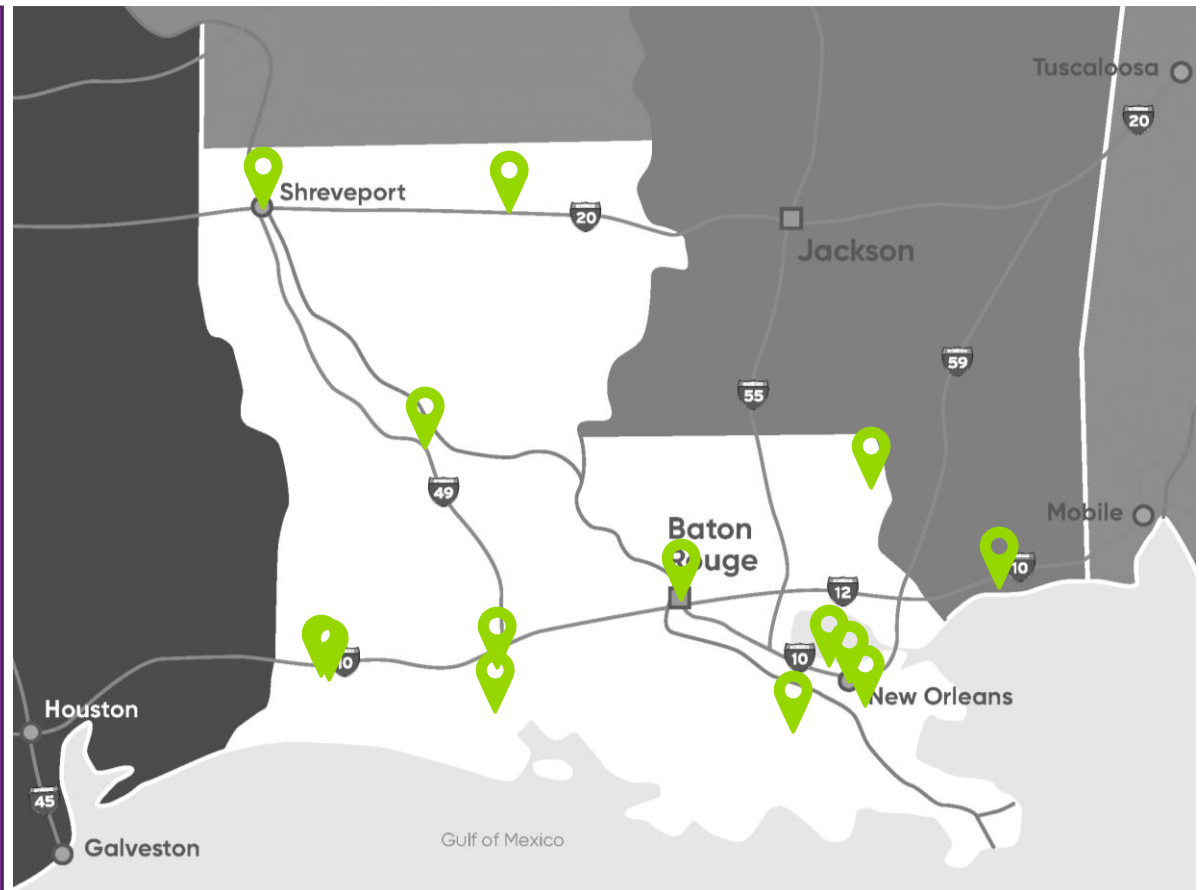
- 10 **Pediatric Critical Care Patients**
Example: torso burns, drug induced psychosis, diabetic keto acidosis
- 8 **Neonatal Intensive Care Patients**
Example: brain bleed, bowel perforation
- 1 **Cardiac Critical Care Patients**
Example: birth defect of the heart
- 1 **Trauma Patients**
Example: motor vehicle accident
- 3 **Other**
Example: brain shunt malfunction, oxygen deprivation



Children's Hospital
New Orleans
LCMC Health

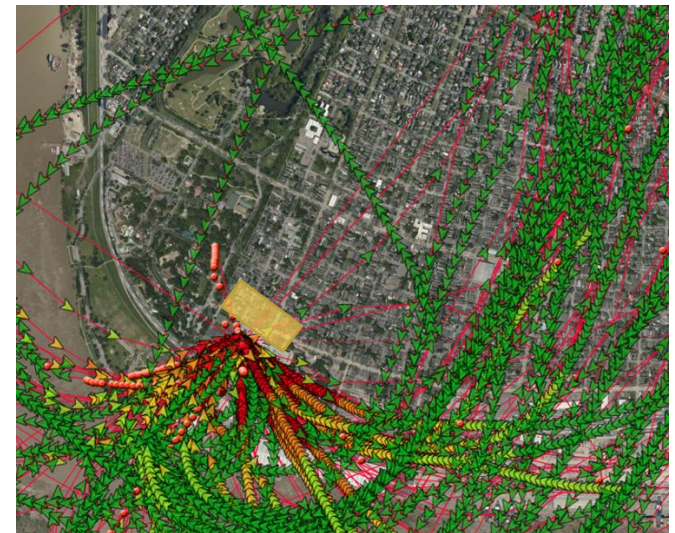
Referring facilities:

- Abbeville General Hospital
- Baton Rouge General Medical Center
- Christus St. Patrick's Hospital of Lake Charles
- East Jefferson General Hospital
- Lake Charles Memorial Hospital for Women – Gauthier Campus
- Memorial Hospital at Gulfport
- Ochsner LSU Health Shreveport
- Our Lady of Lourdes Women's & Children's Hospital – Lafayette
- Our Lady of the Angels Hospital
- Rapides Regional Medical Center
- St. Francis Medical Center – Monroe
- Thibodaux Regional Medical Center
- University Medical Center
- West Jefferson Medical Center



April 2021 Flight Path Data

- No flights used the Northern flight path in April 2021.
- There were 3 incidences where the GPS system went out and picked up the aircraft minutes later depicting the most direct route from Children's Hospital to the aircraft.



The yellow box indicates the neighborhood zone for flight avoidance whenever possible, as previously communicated.